

Electric rider stacker PS15-MRX



1KG=2.205LB 1INCH=25.40MM

Advantages

SAFETY AND PRODUCTIVITY

- AC Motor eliminates carbon brush replacement.
- Multi-function display with BDI and hour meter.
- Side way battery is easy to maintain.
- Damping cushion for low-noise operation.
- Emergency reversing device equipped handle to keep safe.
- Auto deceleration function makes operation more safely.
- Built-in pressure relief valve protects the trucks from overloads, increases the reliability.
- With brake in handle upright and horizontal position, increasing the safety of the truck.
- Emergency power disconnect switch.
- Turtle-shaped low speed switch.
- Stepless speed control.

OPTIMUM STRUCTURAL DESIGN

- Low barycenter ensures the stable operation.
- Vertical driving wheel ensures convenient maintenance and small turning radius. Water-proof and dust-proof motor structure, keeps the braking and motor more durable and reliable.
- The mast and the frame are dividable and exchangeable.
- Full free lifting, fit for low roof house. (3M lift height truck can enter into a 2M door)

SERVICEABILITY

- Low voltage protection setting prolongs the battery life time.
- The electronic components' concentrated design simplifies the circuit and makes easily assemble, debug and maintain.

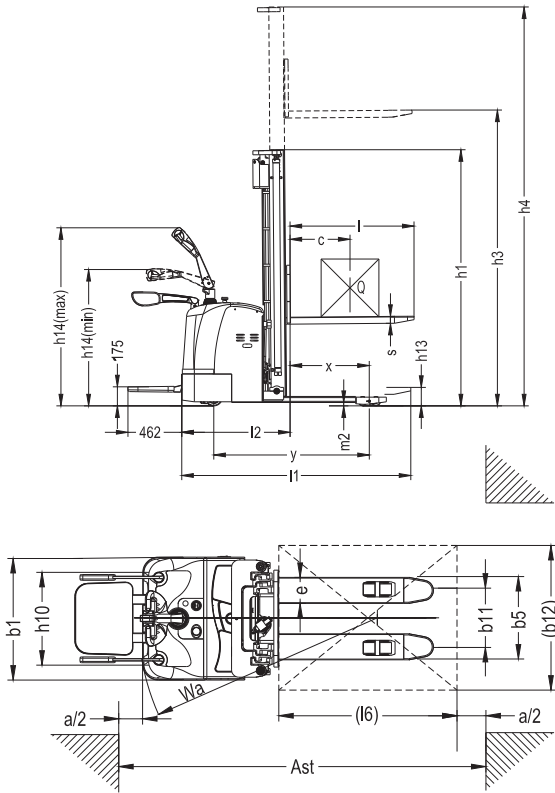
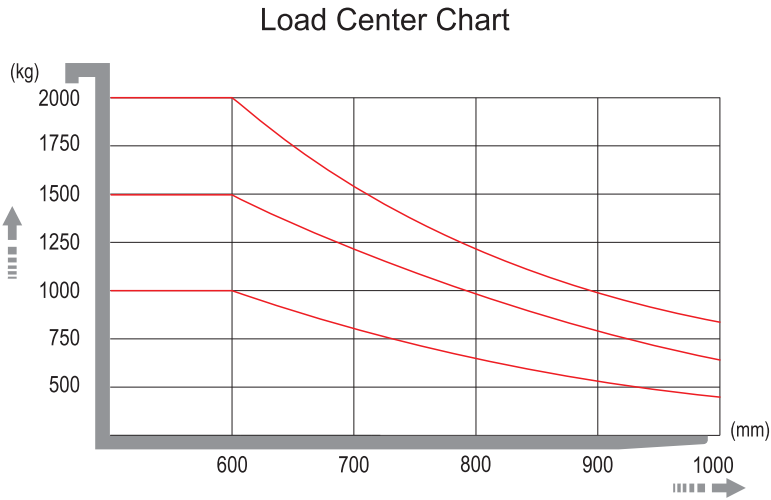
* photo shown with model PS15-MRXK with free lifting

Model: PS15-MRX



General Information	1.2	Manufacturer's type designation		PS15-MRX	
	1.3	Drive: electric (battery type, mains, ...), diesel, petrol, fuel gas		Electric	
Weight	1.4	Operator type: hand, pedestrian, standing, seated, order-picker		Standing	
	1.5	Rated capacity/rated load	Q (kg)	1500	
	1.6	Load centre distance	c (mm)	600	
Tyres	1.8	Load distance, centre of drive axle to fork	x (mm)	697	
	1.9	Wheelbase	y (mm)	1378	
	2.1	Service weight	kg	1140/1190/1200/1290	1370/1400/1530
Tyres	2.2	Axle loading, laden front/rear	kg	1830/1140	
	2.3	Axle loading, unladen front/rear	kg	1040/470	
	3.1	Tyres: solid rubber, superelastic, pneumatic, polyurethane		Polyurethane	
Tyres	3.2	Tyre size, front		Φ250x80	
	3.3	Tyre size, rear		Φ80x84	
	3.4	Additional wheels (dimensions)		Φ150x60	
Tyres	3.5	Wheels, number front/rear (× = driven wheels)		1x+1/4	
	3.6	Tread, front	b10 (mm)	580	
	3.7	Tread, rear	b11 (mm)	404/530	
Dimensions	4.2	Height, mast lowered	h1 (mm)	1735/1985/2135/2235	2050/2210/2410
	4.3	Free lift	h2 (mm)	1300/1550/1700/1800	1570/1740/1940
	4.4	Max. lift height	h3 (mm)	2500/3000/3300/3500	4500/5000/5600
Dimensions	4.5	Height, mast extended	h4 (mm)	2955/3455/3755/3955	5030/5510/6110
	4.9	Height drawbar in driving position min./max.	h14 (mm)	1150/1450	
	4.10	Height of wheel arms	h8 (mm)	81	
Dimensions	4.15	Height, lowered	h13 (mm)	90	
	4.19	Overall length	l1 (mm)	2020(2100)	
	4.20	Length to face of forks	l2 (mm)	950	
Dimensions	4.21	Overall width	b1/b2 (mm)	850	
	4.22	Fork dimensions DIN ISO 2331	s / e / l (mm)	60/180/1070(1150)	
	4.25	Fork spread	b5 (mm)	570/695	
Dimensions	4.32	Ground clearance, centre of wheelbase	m2 (mm)	31	
	4.34.1	Aisle width for pallets 1000 × 1200 crossways	Ast (mm)	2535	
	4.34.2	Aisle width for pallets 800 × 1200 lengthways	Ast (mm)	2515	
Performance Data	4.35	Turning radius	Wa (mm)	1655	
	5.1	Travel speed, laden/unladen	km/h	7.0/7.1	
	5.2	Lift speed, laden/unladen	m/s	0.11/0.16	
Performance Data	5.3	Lowering speed, laden/unladen	m/s	0.14/0.19	
	5.8	Max. gradeability, laden/unladen	%	8/15	
	5.10	Service brake		Electromagnetic	
Motors	6.1	Drive motor rating S2 60 min	kW	1.2(AC)	
	6.2	Lift motor rating at S3 15%	kW	3.0	
	6.4	Battery voltage/nominal capacity K5	(V)/(Ah) or kWh	24/240	24/300
Additional Data	6.5	Battery weight	kg	220	260
	10.7	Sound pressure level at the driver's seat	dB (A)	70	

*The weight shown is for 240AH battery.
*Option: With EPS the drive wheel size is 250x80mm Lithium battery 225AH (Charger 24V/230AH)



Advantages

SAFETY AND PRODUCTIVITY

- AC Motor eliminates replacement of carbon brush.
- Multi-function display with BDI and hour meter.
- Side way battery is easy to maintain.
- Damping cushion for low-noise operation;
- Emergency reversing device in the handle provides higher safety for the whole operation.
- Auto deceleration function makes operation more safely.
- Built-in pressure relief valve protects the trucks from overloads, increases the reliability.
- Braking applied with handle upright and horizontal position, increasing the safety of the truck.
- Emergency power disconnect switch.
- Turtle low speed switch.
- Stepless speed control.

OPTIMUM STRUCTURAL DESIGN

- Low center of gravity ensures the stable operation.
- Vertical driving wheel ensures convenient maintenance and small turning radius. Water-proof and dust-proof motor structure, keeps the braking and motor more durable and reliable.
- The mast and the frame are dividable and exchangeable.

* photo shown with model PS15- MRXK with free lifting

Model: PS15- MRXK

Straddle legs & adjustable forks

AC

EPS
(Option)

General Information	1.2	Manufacturer's type designation		PS15-MRXK	
	1.3	Drive: electric (battery type, mains, ...), diesel, petrol, fuel gas		Electric	
Weight	1.4	Operator type: hand, pedestrian, standing, seated, order-picker		Standing	
	1.5	Rated capacity/rated load	Q (kg)	1500	
	1.6	Load centre distance	c (mm)	600	
	1.8	Load distance, centre of drive axle to fork	x (mm)	677	
Tyres	1.9	Wheelbase	y (mm)	1415	
	2.1	Service weight	kg	1260/1285/1300/1310	1360/1380/1400
	2.2	Axle loading, laden front/rear	kg	1830/1180	
	2.3	Axle loading, unladen front/rear	kg	1040/470	
Dimensions	3.1	Tyres: solid rubber, superelastic, pneumatic, polyurethane		Polyurethane	
	3.2	Tyre size, front		Φ250x70	
	3.3	Tyre size, rear		Φ80x84	
	3.4	Additional wheels (dimensions)		Φ150x60	
Performance Data	3.5	Wheels, number front/rear (× = driven wheels)		1x+ 1/4	
	3.6	Tread, front	b10 (mm)	580	
	3.7	Tread, rear	b11 (mm)	1040/1430	
	4.2	Height, mast lowered	h1 (mm)	1805/2055/2205/2305	2120/2280/2480
	4.3	Free lift	h2 (mm)	1300/1550/1700/1800	1570/1740/1940
	4.4	Max. lift height	h3 (mm)	2500/3000/3300/3500	4500/5000/5600
	4.5	Height, mast extended	h4 (mm)	3025/3525/3825/4025	5080/5560/6160
	4.9	Height drawbar in driving position min./max.	h14 (mm)	1150/1450	
	4.10	Height of wheel arms	h8 (mm)	86	
	4.15	Height, lowered	h13 (mm)	70	
	4.19	Overall length	l1 (mm)	2020(2100)	
	4.20	Length to face of forks	l2 (mm)	962	
	4.21	Overall width	b1/b2 (mm)	1170/1560	
	4.22	Fork dimensions DIN ISO 2331	s / e / l (mm)	35/100/1070(1150)	
	4.25	Fork spread	b5 (mm)	200-800	
Motors	4.32	Ground clearance, centre of wheelbase	m2 (mm)	35	
	4.34.1	Aisle width for pallets 1000 × 1200 crossways	Ast (mm)	2565	
	4.34.2	Aisle width for pallets 800 × 1200 lengthways	Ast (mm)	2545	
	4.35	Turning radius	Wa (mm)	1695	
Additional Data	5.1	Travel speed, laden/unladen	km/h	7.0/7.1	
	5.2	Lift speed, laden/unladen	m/s	0-0.16/0-0.24	
	5.3	Lowering speed, laden/unladen	m/s	0-0.39/0-0.26	
	5.8	Max. gradeability, laden/unladen	%	8/15	
Motors	5.10	Service brake		Electromagnetic	
	6.1	Drive motor rating S2 60 min	kW	1.5(AC)	
	6.2	Lift motor rating at S3 15%	kW	3	
	6.4	Battery voltage/nominal capacity K5	(V)/(Ah)or kWh	24/240	24/300
Motors	6.5	Battery weight	kg	220	260
	10.7	Sound pressure level at the driver's seat	dB (A)	70	

*Option: With EPS the drive wheel size is 250x80mm.

